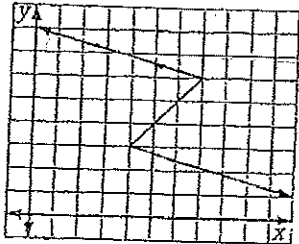


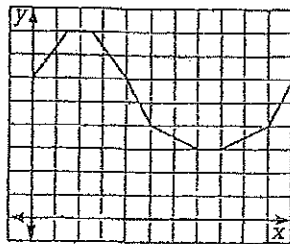
Function or Not?

For questions 1–6, tell whether each graph is a function. If it is not, circle the area of the graph that doesn't comply with the definition of "function."

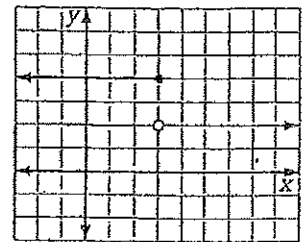
1.



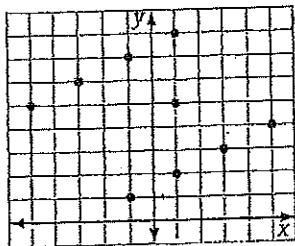
2.



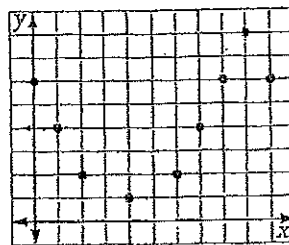
3.



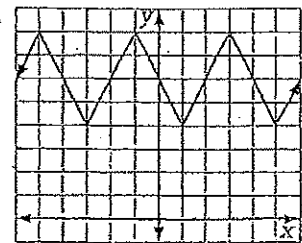
4.



5.



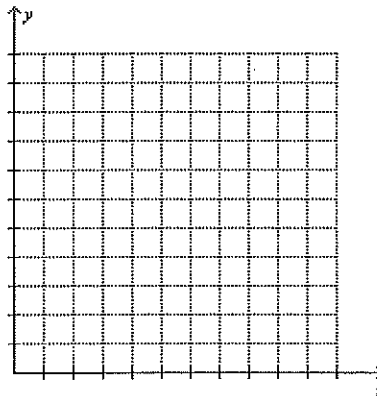
6.



7. Use the table to make a graph of the data and then answer the questions.

Average Height in Inches for Girls

Age	Height
1	29
2	33
3	36
4	39
5	41
6	44
7	47
8	50
9	52
10	54



a. What is the control variable?

b. What is the dependent variable?

c. Is this a function? Why or why not?

d. According to this graph, approximately how tall is an 11 year old girl?

For 8–10, identify the control variable and the dependent variable. Write function or NOT a function. Be ready to explain all answers. (You may sketch a graph to help you.)

8. On average, it takes Barney 6 minutes to run a mile. He charts his distance in miles and time in minutes for 36 minutes.

Identify the control:

Identify the dependent:

Is this a function?

9. Chrysy keeps track of the number of points she earns on her math home work for the entire month of September. So far, she is doing well. (The maximum amount of points possible is 5)

09/02/02	09/04/02	09/05/02	09/10/02	09/12/02	09/13/02	09/16/02	09/17/02
4	5	3	5	4	0	4	5

Identify the control:

Identify the dependent:

Is this a function?

10. Joe believes that the number of students that sleep during class is directly related to what subject is being taught. In order to test out this conjecture, Joe walks around the building and records the type of class and number of sleeping students.

Eng.	Math	SS	Span	Germ	SS	Math	Math	Wood	Eng	Gym
3	0	4	5	2	3	1	4	0	3	0

Identify the control:

Identify the dependent:

Is this a function?