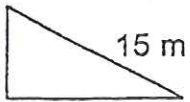


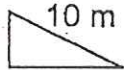
Practice Finding the Area of Similar Figures

Use our class conjecture about the relationship between the side length scale factor and the area scale factor.

1)



Area = 54 m^2

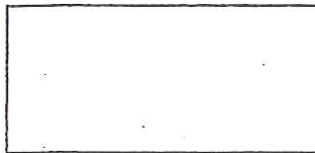


Area = 24 m^2

2)



Area = 24 cm^2

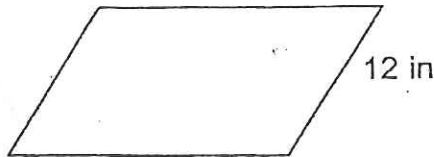


Area = 150 cm^2

3)

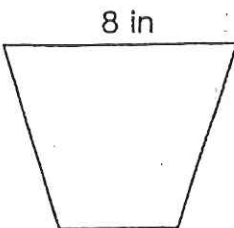


Area = 32 in^2

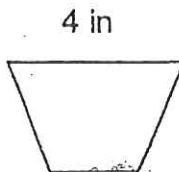


Area = 72 in^2

4)

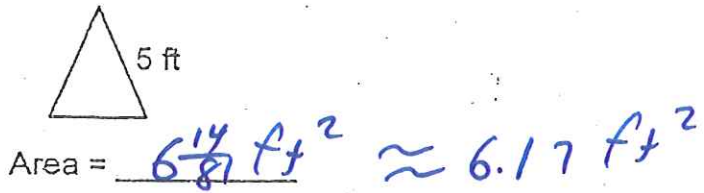
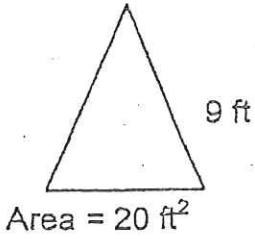


Area = 56 in^2

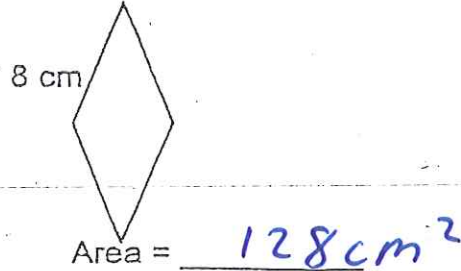
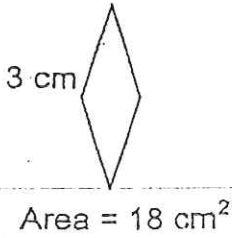


Area = 14 in^2

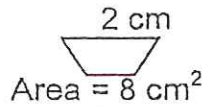
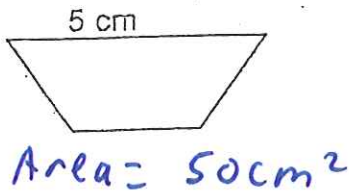
5)



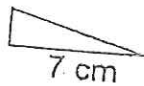
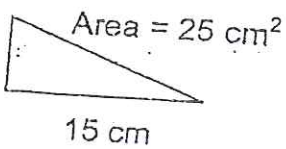
6)



7)

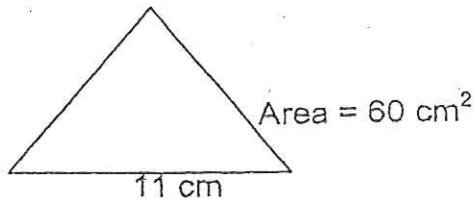
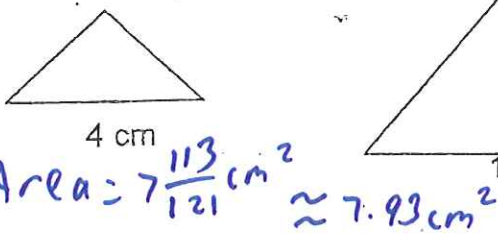


8)



Area = $5\frac{4}{9} \text{ cm}^2$ or $5.\bar{4} \text{ cm}^2$

9)



10)

