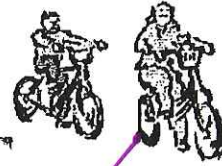
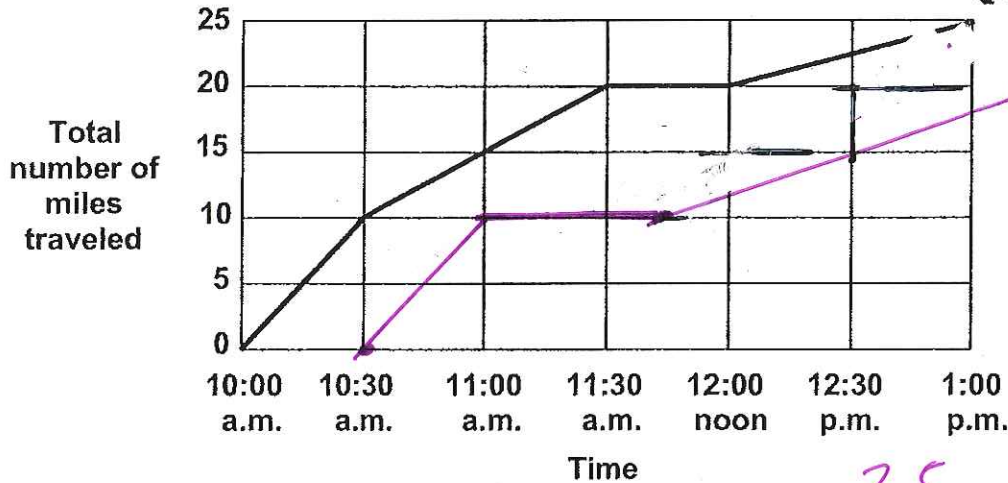


Name : Key

Bike Ride

Selina and Jack went for a bike ride today.

They made this graph of their bike ride.



1. How many miles did they travel in all? 25 miles

2. How long did their bike ride take? 3 hours

3. When were they cycling the fastest? The 1st half hour 10:00 a.m. to 10:30 a.m.

Explain your answer.

They covered the most distance of 10 miles in 30 minutes. All other 30 minute time periods are 5 miles or less.

4. What does the graph show that they did between 11:30 a.m. and 12 noon?

They didn't travel any miles.

Explain your answer.

The graph from 11:30 a.m. to noon is horizontal. The number of miles stayed constant. This tells us they did NOT travel.

5. What was their speed between 12 noon and 1 p.m.?

They covered 5 miles in 1 hour. 5 miles an hour

6. Create in your own graph on the same grid that represent the following information:

- You started your bike ride at 10:30 a.m.
- You rode 10 miles in 30 minutes.
- You took a 45 minute lunch break.
- You rode 10 miles in 1 and a half hours.
- You rode 5 miles in a quarter of an hour.

Look at graph above.